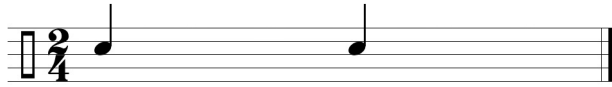


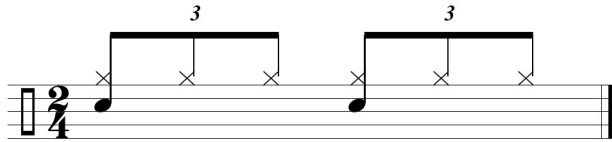
The Polyrhythm Formula

3 over 2

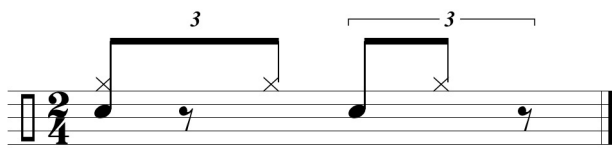
Take 2 notes



Divide each into 3



Play every 2nd

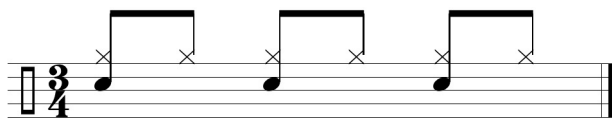


2 over 3

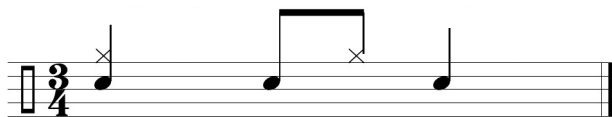
Take 3 notes



Divide each into 2



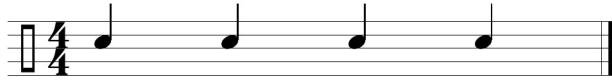
Play every 3rd



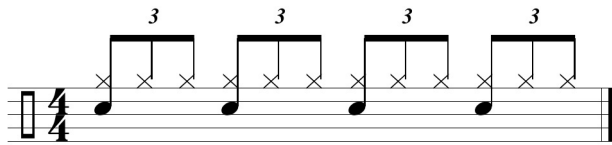
The Polyrhythm Formula

3 over 4

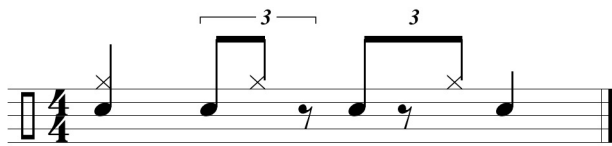
Take 4 notes



Divide each into 3



Play every 4th

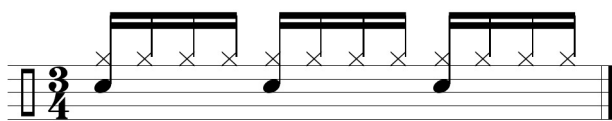


4 over 3

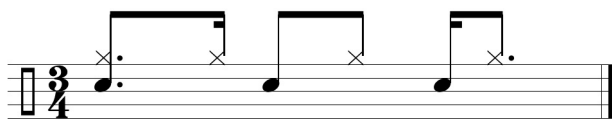
Take 3 notes



Divide each into 4



Play every 3rd



3 over 2 / 2 over 3 in a Groove

Musical notation for the exercise '3 over 2 / 2 over 3 in a Groove'. It consists of three staves. The top staff is in 4/4 time and contains a sequence of eighth notes with 'x' marks above them, grouped into four triplets (labeled '3') and four pairs (labeled '2'). The middle staff is in 4/4 time and contains a sequence of eighth notes with 'x' marks above them, grouped into four pairs (labeled '2') and four triplets (labeled '3'). The bottom staff is in 12/8 time and contains a sequence of eighth notes with 'x' marks above them, grouped into four pairs (labeled '2') and four triplets (labeled '3').

4 over 3 / 3 over 4 in a Groove

Musical notation for the exercise '4 over 3 / 3 over 4 in a Groove'. It consists of three staves. The top staff is in 4/4 time and contains a sequence of eighth notes with 'x' marks above them, grouped into four groups of four (labeled '4') and four groups of three (labeled '3'). The middle staff is in 4/4 time and contains a sequence of eighth notes with 'x' marks above them, grouped into four groups of three (labeled '3') and four groups of four (labeled '4'). The bottom staff is in 12/8 time and contains a sequence of eighth notes with 'x' marks above them, grouped into four groups of four (labeled '4') and four groups of three (labeled '3').